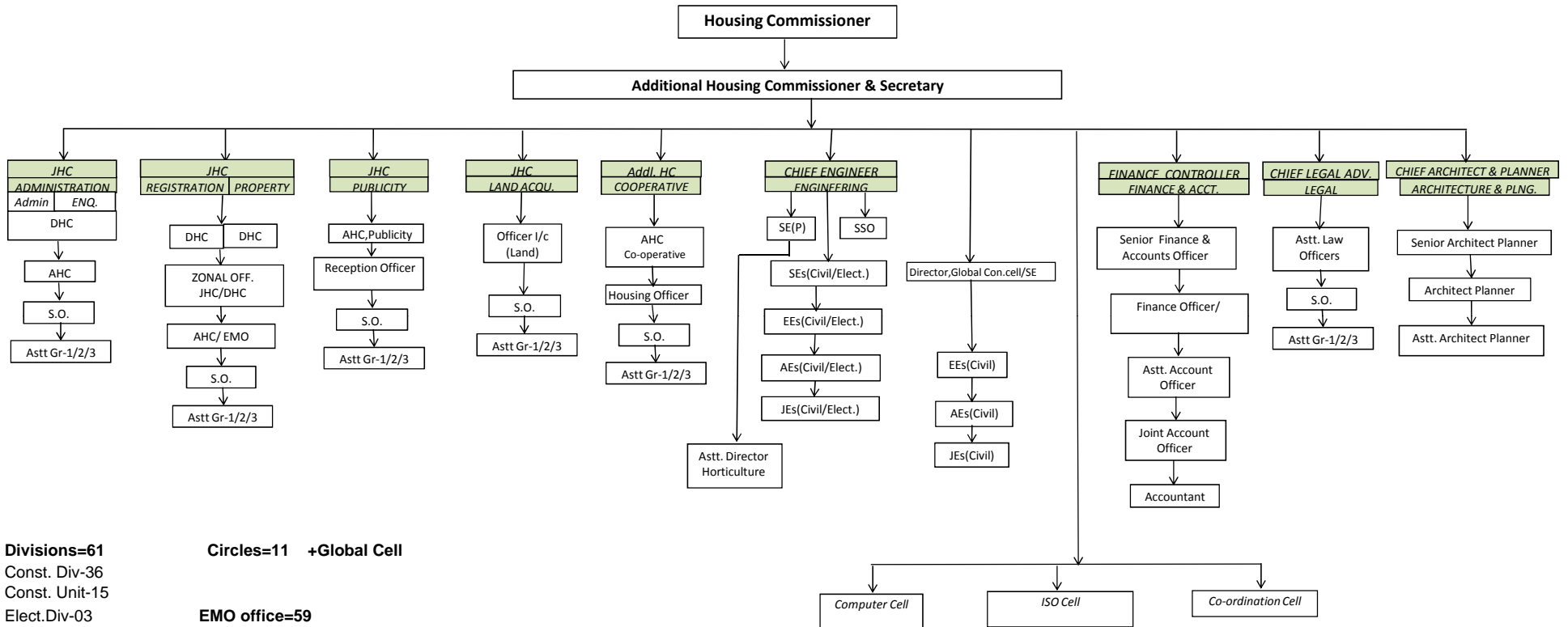


ADMINISTRATIVE STRUCTURE

U.P. HOUSING & DEVELOPMENT BOARD



Divisions=61
 Const. Div-36
 Const. Unit-15
 Elect.Div-03
 Design Div-03
 Quality Control Div-03
 Management Dev. Center-01

Circles=11 +Global Cell

EMO office=59